

The background of the entire page is a detailed white line-art map of an urban area, showing a dense grid of streets, roads, and various landmarks. The map is rendered in white lines against a dark grey background.

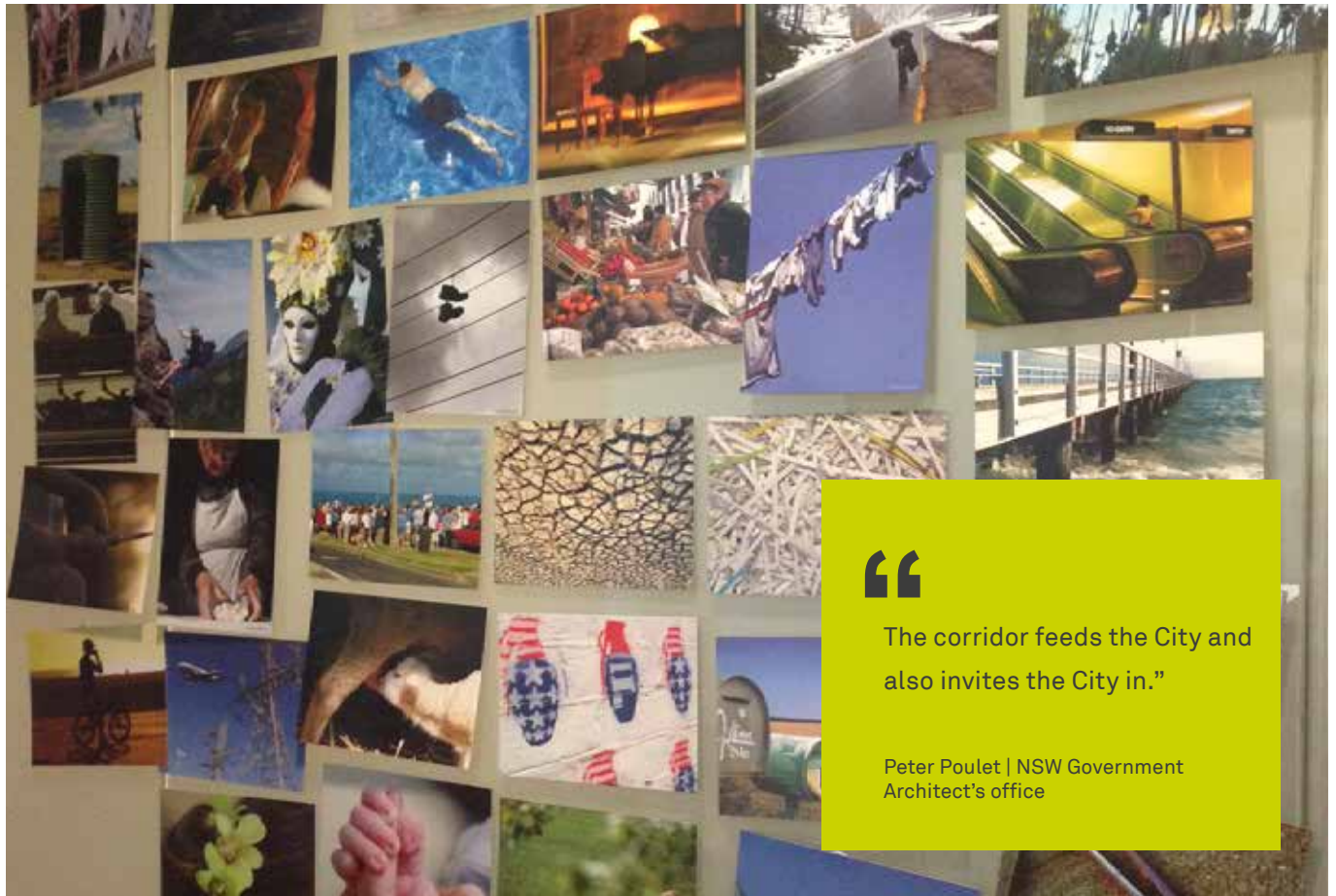
C2E

Central to Eveleigh

**Stakeholder
visioning workshop**

3-4 Dec. 2014

Day 1 newsletter



“

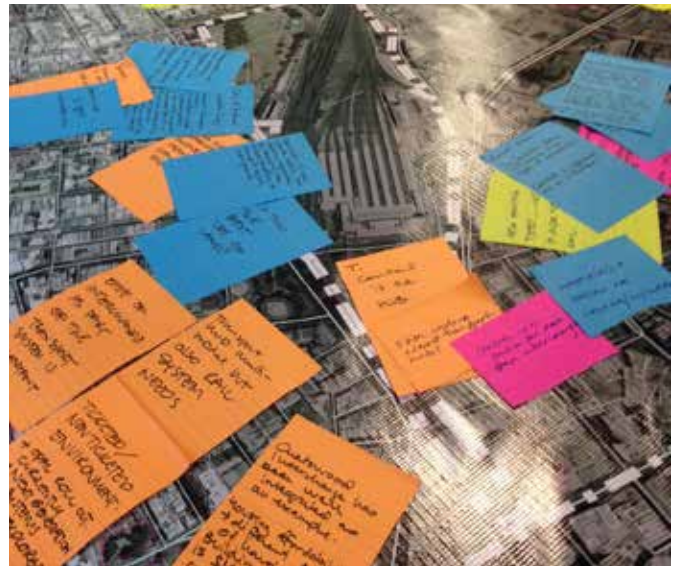
The corridor feeds the City and also invites the City in.”

Peter Poulet | NSW Government Architect's office

Workshop expectations

- Clarity
- Shared aspirations
- Integrated planning approach
- Understanding priorities
- Unpack the term 'housing diversity'
- Understand the people/rail interface
- Connect vision and budget
- A clear path to resolve issues
- Listen to others
- Possible integrated transport outcomes
- Connect government and community needs
- Understand what is already happening in the corridor and what the quick wins are
- Share learnings
- Open dialogue
- Drivers and principles for the public open space network
- Push the boundaries
- Understand delivery of government objectives through C2E
- Agency collaboration
- A place based approach
- Understand the possible value of creative industry and arts
- Be courageous
- Tie the design to Sydney 2030
- Explore the tension between global and local
- Heritage opportunities
- Translation of themes to local context
- Commitment from stakeholders
- Whole of government approach to C2E

Creating a common knowledge



UNIQUE CHARACTERISTICS

- Diversity and heritage
- Housing diversity
- Social cohesion
- Strategic location
- Creative energy

KEY ISSUES FOR THE FUTURE

- Dramatic population shift
- Resilience could feed into uniqueness
- Public domain connected and layered
- Connectivity between uses
- Local employment generation
- Fusion / extension of its surrounds



“The corridor is an edge at the middle of a new place”

Malcolm Smith - Arup Design Director



Corridor Transformation

WHAT LEGACY DO WE WANT THE PROJECT TO LEAVE?

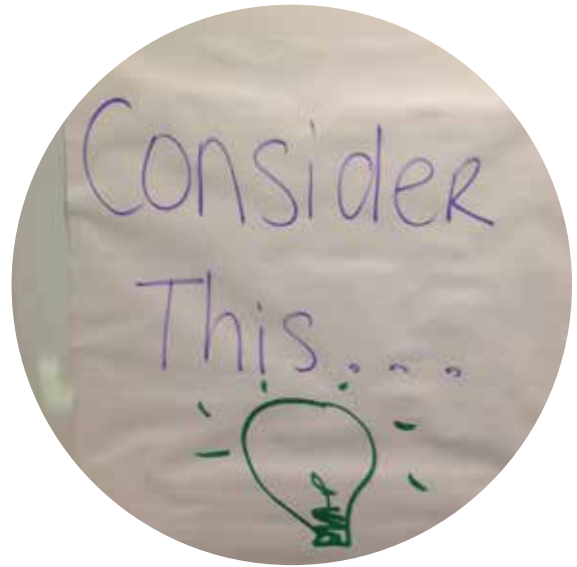
- Live / work / play
- A car free suburb
- Health community
- Resilience to climate change as an exemplar development
- Wholly integrated project where boundaries vanish
- Identity and pride in character

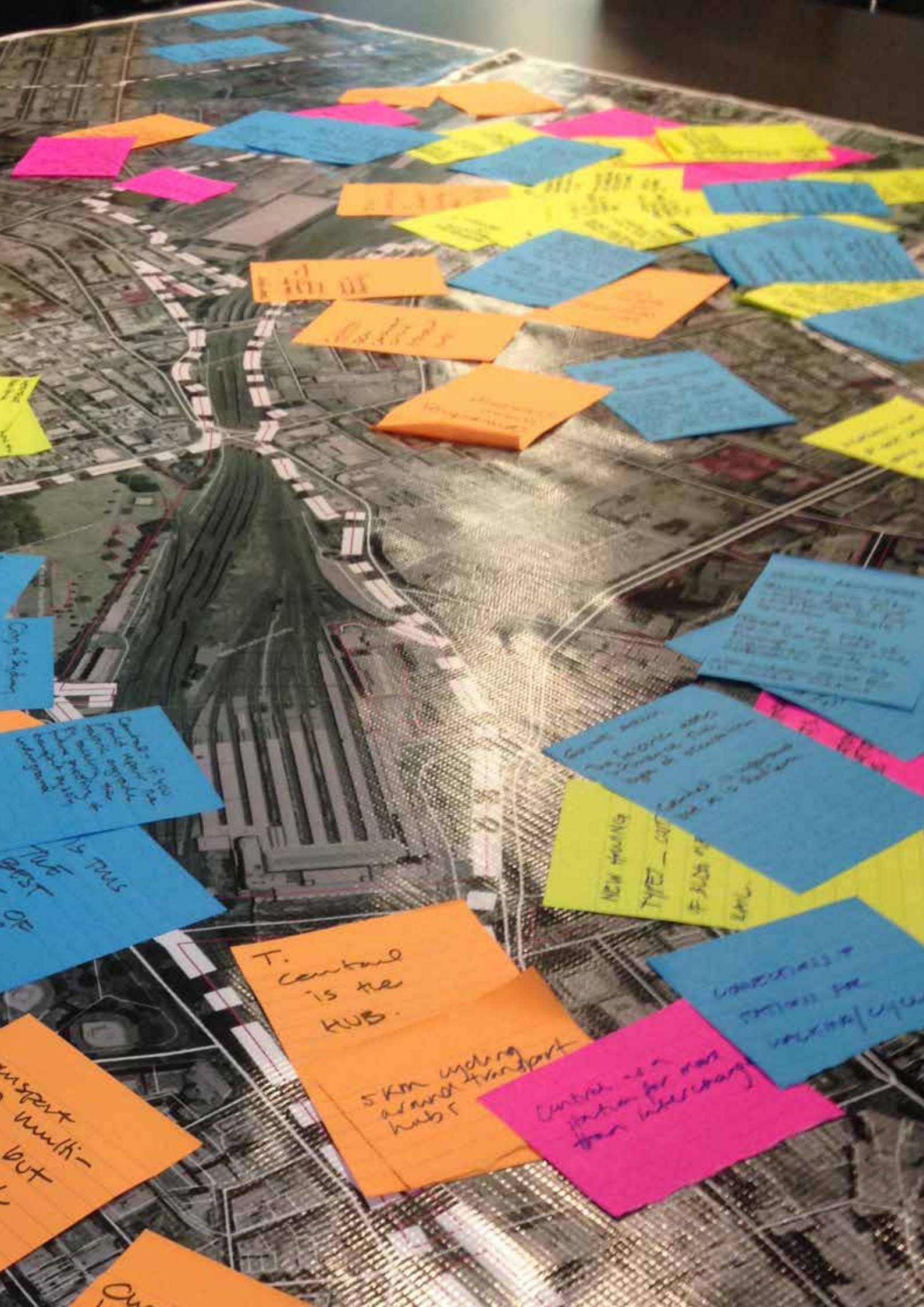
WHAT WOULD SUCCESS LOOK LIKE?

- Shared aspirations
- Integrated planning approach
- Place 'champion'
- Economically feasible
- Not overly gentrified
- Positive connections
- A cohesive and diverse community
- Mode split away from private cars
- Restored ecology
- Human scale environment

WHAT DO WE NEED TO ACHIEVE SUCCESS?

- Governance structure and strong leadership
- Community and stakeholder ownership
- Early demonstration of good will "start with the park"
- Global / city productivity
- Current residents happy with outcomes
- Be flexible
- Outlast political cycles





T. Central is the HUB.

5km walking around transport hub

Central is a position for more than industry

Industrial + retail for central area

NEW HOUSING
TYPE - 1000
1000

Central is the hub
is the main
transport hub
in the city

is the main
transport hub
in the city

transport hub
but

Central

